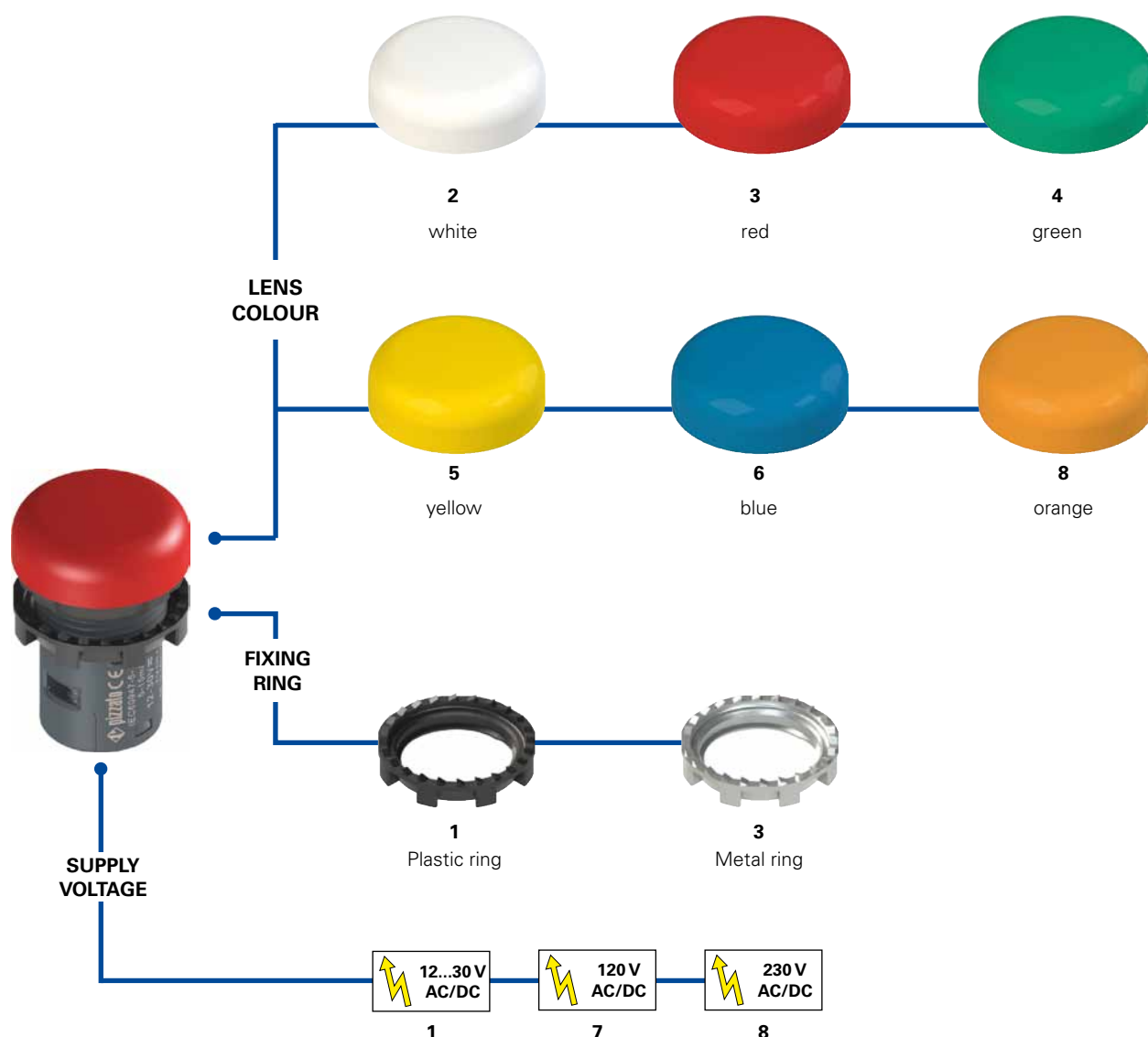


Selection diagram



Code structure

Attention! The feasibility of a code number does not mean the effective availability of a product. Please contact our sales office.

E6 1IL1A2110

Fixing ring and shaped ring	
1	Plastic ring (standard)
2	Plastic fixing ring and shaped ring
3	Metal ring
4	Metal fixing ring and shaped ring

Supply voltage	
1	12 ... 30 Vac/dc (high luminosity)
7	120 Vac/dc (standard luminosity)
8	230 Vac/dc (standard luminosity)

Engraving	
0	no engraving (standard)
IT7	IN SERVIZIO
L54	⚡
...

Other engravings on request. See page 138.

Lens colour	
2	white
3	red
4	green
5	yellow
6	blue
8	orange



- Main features**
- Fully integrated indicator light in monolithic body
 - Protection degrees IP67 and IP69K
 - Three supply voltages: 12 ... 30 Vac/dc, 120 Vac/dc, 230 Vac/dc
 - Customisation with symbols available

Quality marks:



UL approval: E131787
 EAC approval: RU C-IT ДМ94.В.01024

Technical data

General data

Protection degree: IP67 acc. to EN 60529
 IP69K acc. to ISO 20653 (with shaped ring VE GP12H1A or plate holder VE PT32A00A0)

Ambient temperature: -40°C ... +70°C

Endurance: Min. 50,000 hours (at rated voltage and +25 °C ambient temperature)

Tightening torque of the terminal screws: 0.8 ... 1 Nm

Tightening torque of the fixing ring: 2 ... 2.5 Nm

Utilization requirements: See page 139

LED unit

Cable cross section: min 1 x 0.34 mm² (1 x AWG 22)
 max. 2 x 1.5 mm² (2 x AWG 16)

Operating voltages and currents: 12 ... 30 Vac/dc; 5 ... 15 mA (high luminosity)

Operating voltages and currents: 102 ... 138 Vac/dc; 2.5 mA (standard luminosity)
 195 ... 264 Vac/dc; 2.5 mA

In compliance with standards:

IEC 60947-1, IEC 60947-5-1, IEC 60204-1, EN 60947-1, EN 60947-5-1, EN 60204-1, UL 508, CSA 22-2 No. 14.

Compliance with the requirements of:

Low Voltage Directive 2014/35/EU, EMC Directive 2014/30/EU.

Features approved by UL

For Use on a Flat Surface of a Type 1, 4X, 12 and 13
 Pollution degree 2
 Overvoltage category 3
 Wire range 16-22 AWG
 The tightening torque of the Terminals Block is 0.8-1.0 Nm

General data

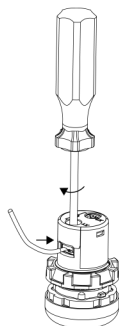
Protection degrees IP67 and IP69K

IP69K
IP67

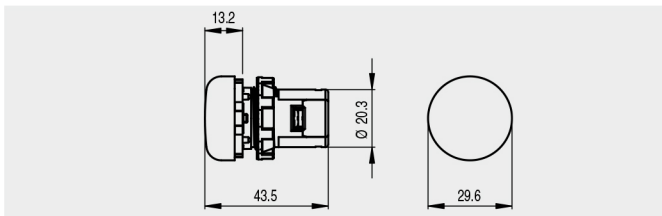
These devices are designed to be used in the toughest environmental conditions and they pass the IP67 immersion test acc. to EN 60529. They can therefore be used in all environments where maximum protection degree of the housing is required. Due to their special design, these devices are suitable for use in equipment subjected to cleaning with high pressure hot water jets. These devices meet the IP69K test requirements according to ISO 20653 (water jets with 100 bar and a 80°C).

Integrated screw connection

The shape of the type E6 indicator light, though very compact, allows the integration on the device of all components for proper installation and functioning. All that is required is to wire the device by means of its screw terminals in a quick and intuitive way. There is no need to install further components.




Dimensions

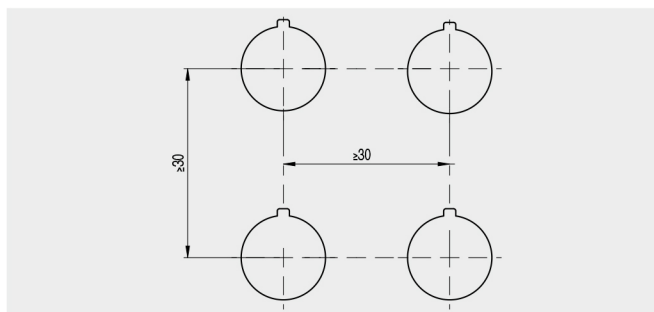


Selection table

Packs of 10 pcs.

Colour	Operating voltage		
	12 ... 30 Vac/dc	120 Vac/dc	230 Vac/dc
 white	E6 1IL1A2110	E6 1IL7A2110	E6 1IL8A2110
 red	E6 1IL1A3110	E6 1IL7A3110	E6 1IL8A3110
 green	E6 1IL1A4110	E6 1IL7A4110	E6 1IL8A4110
 yellow	E6 1IL1A5110	E6 1IL7A5110	E6 1IL8A5110
 blue	E6 1IL1A6110	E6 1IL7A6110	E6 1IL8A6110
 orange	E6 1IL1A8110	E6 1IL7A8110	E6 1IL8A8110

Minimum distances for installation



All measures in the drawings are in mm